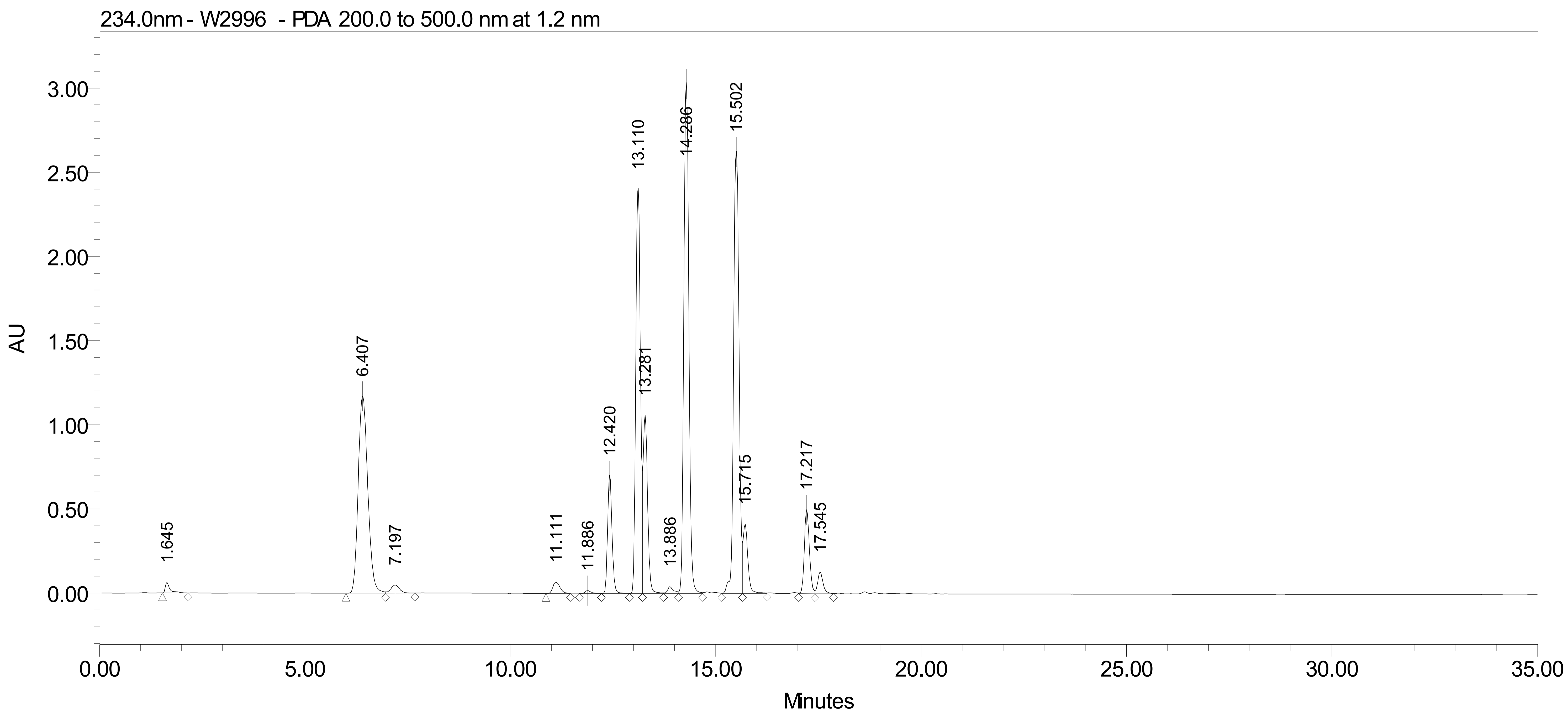
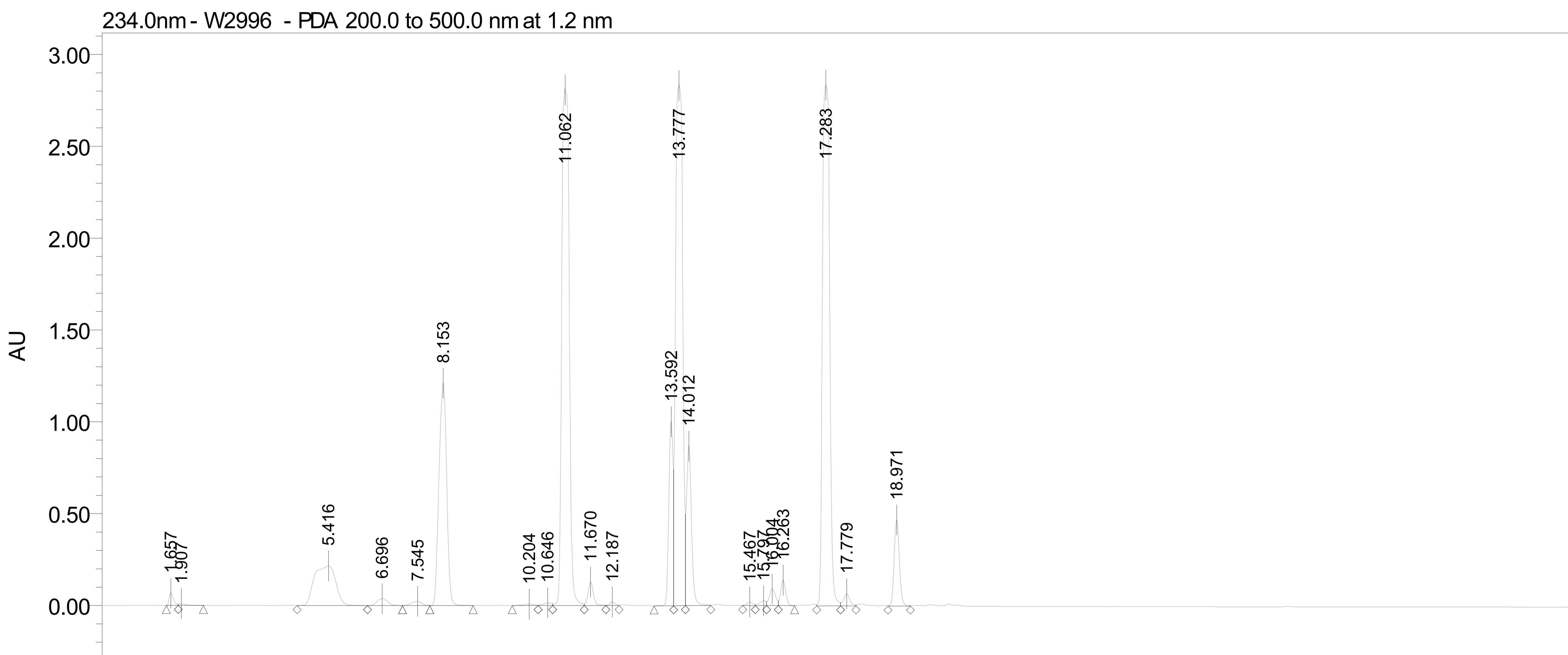


SAMPLE INFORMATION

Sample Name:	formini 3 DMAP, glic 2 DMAP	Acquired By:	Lauma
Sample Type:	Unknown	Sample Set Name:	
Vial:	10, 100	Acq. Method Set:	MeCN 10%
Injection #:	1	Processing Method:	PDA
Injection Volume:	10.00 ul	Channel Name:	234.0nm
Run Time:	35.0 Minutes	Proc. Chnl. Descr.:	PDA 234.0 nm
Date Acquired:	11/12/2018 3:24:09 PM EET, 11/13/2018 10:29:49 AM EET		
Date Processed:	11/12/2018 4:23:54 PM EET, 11/13/2018 10:58:03 AM EET		



— glic 2 DMAP; Date Acquired: 11/12/2018 3:24:09 PM EET; Vial: 100; Channel: PDA 234.0 nm
— formini 3 DMAP; Date Acquired: 11/13/2018 10:29:49 AM EET; Vial: 10; Channel: PDA 234.0 nm

SampleName: glic 2 DMAP

	SampleName	Retention Time (min)	Area	% Area
1	glic 2 DMAP	1.657	487257	0.32
2	glic 2 DMAP	1.907	116894	0.08
3	glic 2 DMAP	5.416	7689905	5.12
4	glic 2 DMAP	6.696	680262	0.45
5	glic 2 DMAP	7.545	395962	0.26
6	glic 2 DMAP	8.153	15456338	10.30
7	glic 2 DMAP	10.204	146008	0.10
8	glic 2 DMAP	10.646	203394	0.14
9	glic 2 DMAP	11.062	34859159	23.22
10	glic 2 DMAP	11.670	1161110	0.77
11	glic 2 DMAP	12.187	174493	0.12
12	glic 2 DMAP	13.592	6863492	4.57
13	glic 2 DMAP	13.777	33506704	22.32
14	glic 2 DMAP	14.012	7289410	4.86
15	glic 2 DMAP	15.467	193006	0.13
16	glic 2 DMAP	15.797	277403	0.18
17	glic 2 DMAP	16.004	939929	0.63
18	glic 2 DMAP	16.263	1163017	0.77
19	glic 2 DMAP	17.283	33829086	22.54
20	glic 2 DMAP	17.779	681952	0.45
21	glic 2 DMAP	18.971	3988142	2.66

SampleName: formini 3 DMAP

	SampleName	Retention Time (min)	Area	% Area
1	formini 3 DMAP	1.645	498291	0.44
2	formini 3 DMAP	6.407	19029580	16.87
3	formini 3 DMAP	7.197	727508	0.64
4	formini 3 DMAP	11.111	805345	0.71
5	formini 3 DMAP	11.886	164796	0.15
6	formini 3 DMAP	12.420	5265380	4.67
7	formini 3 DMAP	13.110	18978891	16.83
8	formini 3 DMAP	13.281	8128088	7.21
9	formini 3 DMAP	13.886	401162	0.36
10	formini 3 DMAP	14.286	25806718	22.88
11	formini 3 DMAP	15.502	24152024	21.41
12	formini 3 DMAP	15.715	3440940	3.05
13	formini 3 DMAP	17.217	4226515	3.75
14	formini 3 DMAP	17.545	1167657	1.04